



Good Company

*What a rare and special Joy it is
to see and meet good company
Where all unite through common vision,
A vision unattainable alone.
Where each has learned to share a
special gift with Gladness
When mutual respect has led to
Mutual acceptance
Group support surrounds the leadership
And leaders say without regret your
company is worth the effort*

Boris Kramer, Sculptor

Through his father Richard, the traditional blacksmith craft was passed on to Boris; at home, art and metal were part of a daily life. After completing a degree in Fine Arts at McMaster University in 1995, Boris committed his artistic future to metal and joined his father at the forge.

Alberta Business Family Institute

Vision

We exist to ensure that business families succeed for generations to come.

Mission

We develop and strengthen business families by providing education and resources tailored to their unique challenges.

Values

We uphold the core values of education and family entrepreneurship by maintaining a high code of ethics, client relations, team spirit, and community development.

Alberta Business Family Leadership

Board of Directors

Allison Maher, Chair; Penny Leckie; Teresa Melton; Codie Richard; Chris Thrall; Shelly Uytterhagen; Ron Woodward; Kevin Zimmer

Founding Patrons

Ronald N. Mannix; Sandy A. Mactaggart; Stanley A. Milner

Special Advisors

Business Families Foundation; Philippe & Nan-b de Gaspé-Beaubien

Alberta School of Business

Dean and Stanley A Milner Professor

Joseph Doucet, PhD

Alberta School of Business

Vice Dean and Academic Director

Lloyd Steier, PhD

Executive Director

Shauna Feth

Past Board Members

Bunny Ferguson (founding Chair); J. Lynn Adams; Robert Carwell; Russell Cook; Brad Cox; Marc de la Bruyère (past Chair); Dennis Erker (past Chair); Jay Gendall; David Ghermezian; Kathy Grieve; John Greer; Merleen Hodgson; David Kent; Vince Lachance; Grant Lovig (past Chair); Bruce MacKenzie; Margaret-Jean Mannix; Mike Percy (past Dean); Sheilagh Ross; Terry Royer; Tom Scott (past Acting Dean); Russ Stanley; Karen Webb; Ralph Young

Program Administrator

Valerie Plamondon

The Alberta Business Family Institute | 2-001 Enterprise Square,
10230 Jasper Ave | Edmonton, AB T5J 4P6 | 780.492.0234 |
abfi@ualberta.ca | www.abfi.ca

Signature 2013

The Alberta Business Family Institute
presents an evening with,

the Mullen Family

November 20 | Calgary, Hotel Arts
November 21 | Edmonton, Matrix Hotel

The Evening's Program

Reception and Registration

Silent Auction
Official Welcome
Dinner
Dessert

Mullen Video

Mullen Family Presentation

Moderated Discussion
Question and Answer Period
ABFI Presentation to the Mullen Family
Closing Remarks

 **Mullen Group**

Alberta
SCHOOL of BUSINESS
UNIVERSITY OF ALBERTA

Event Supported by:



RBC Foundation®

Event Sponsored by:

KPMG Enterprise™
Your Private Company Adviser



Silver Sponsor:

The Melton Family

Bronze Sponsor:

MAWER

Calgary & Edmonton Sponsored Silent Auction Items:

Item # 1 - 2 nights accommodation and 1 round of golf for 4, at Black Mountain in Kelowna, BC

Donated by:



Item # 2 - 2 Running Room jackets, 2 caps and 2 pair of socks, 2 training journals and 2 entries into the sold out Melissas Road Race in Banff, AB

Donated by:



Item # 3 - 1 Family pass valid for 3 Tournaments during the 2014 season at Spruce Meadows, Calgary AB

Donated by:



Item # 4 - Beer tasting for 4 at the Big Rock Loft with Brewmaster, Paul Gautreau and a gift bag of Big Rock goodies, Calgary AB. **This sponsored auction item is available for Signature Calgary 2013 only.

Donated by:

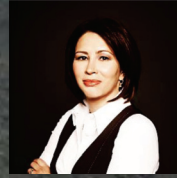


*Two of each item is available. Only one of each item will be auctioned at each event with the exception of Item # 4.

Printing Sponsor:



Welcome



Welcome to the Alberta Business Family Institute's 11th annual Signature Event!

Each year we recognize a leading Canadian business family and ask them to share their unique story with us. This year we are honoured to welcome the Mullen Family. Tonight they will share their remarkable journey with us.

Thank you for supporting this event through your attendance and sponsorship. Your support makes it possible for the Alberta Business Family Institute to help business families succeed for generations to come.

Allison Maher
Chair, Advisory Board
Alberta Business Family Institute

Moderator



Judith Ravensbergen, Senior Private Banker, RBC Wealth Management, Private Banking

Judith Ravensbergen brings more than 25 years of experience in banking and financial markets to her role as Senior Private Banker. She provides comprehensive financial

management and trusted advisory services for high net worth families.

Ms. Ravensbergen holds a Commerce degree and an MBA from Concordia University. She is an accredited Financial Planner and standing member of IFEA (Institute of Family Enterprise Advisors). She recently completed her Family Enterprise Advisor designations at the UBC Sauder School of Family Business. Judith's passion is helping families thrive both financially and personally. She firmly believes that a healthy family and a healthy business are both achievable.

Judith fundraises, volunteers and provides board support for a number of not for profit organizations. In her spare time, she loves being in the great outdoors with her family.

Murray Mullen



Chairman and Chief Executive Officer, Mullen Group Ltd.

Murray received his Bachelor of Arts degree in Economics from the University of Calgary in 1977 and went on to join the family owned and operated business in the same year. Throughout his thirty plus years with Mullen, Murray has held several positions in the Company including his present role as Chairman and CEO, and Director.

Murray is active in a number of professional and community organizations and has served the transportation industry associations in Canada and the United States. In addition to his commitments to Mullen Group, Murray currently sits as a director on the boards of Western Energy Services and Whitecap Resources Inc. Throughout his career, Murray has served on numerous corporate and charitable boards.